

DEPARTMENT OF THE ARMY TECHNICAL MANUAL

ORGANIZATIONAL MAINTENANCE REPAIR PARTS AND
SPECIAL TOOLS LIST FOR
TEST STAND, GYRO STABILIZED PLATFORM MT-4145/ASN-86

Headquarters, Department of the Army, Washington, D.C.

18 August 1971

TABLE OF CONTENTS

	Paragraph	Page
SECTION I.	INTRODUCTION	
	Scope	1-1. 1-1
	General	1-2. 1-1
	Explanation of Columns	1-3. 1-1
	Special Information	1-4. 1-1
	How to Locate Repair Parts	1-5. 1-3
	Abbreviations (Not Applicable)	1-6. 1-4
	Federal Supply Codes for Manufacturers	1-7. 1-4
	Recommendations for Maintenance Publication Improvements	1-8. 1-4
SECTION II.	PRESCRIBED LOAD ALLOWANCE	2-1
III.	REPAIR PARTS FOR ORGANIZATIONAL MAINTENANCE	
IV.	SPECIAL TOOLS, TEST AND SUPPORT EQUIPMENT FOR ORGANIZATIONAL MAINTENANCE (Not Applicable)	4-1
V.	INDICES	
	Federal Stock Number Cross-Reference to Index Number	5-1
	Reference Number Cross-Reference to Figure and Item Number	5-2
	Reference Designation Cross-Reference to Index Number	5-3
	Federal Stock Number Cross-Reference to Figure and Item Number	5-4
	Figure and Item Number Cross-Reference to Index Number	5-5

LIST OF ILLUSTRATIONS

Number	Title	
1	Test Stand, Gyro Stabilized Platform MT-4145/ASN-86	3-2
		i/(ii blank)

ORGANIZATIONAL MAINTENANCE REPAIR PARTS AND SPECIAL TOOLS LIST

SECTION I. INTRODUCTION

1-1. Scope.

This manual lists repair parts and special tools required for the performance of organizational maintenance of the Test Stand, Gyro Stabilized Platform MT-4145/ASN-86.

1-2. General.

This Repair Parts and Special Tools List is divided into the following sections:

a. Prescribed Load Allowance (PLA) -Section II. A composite listing of the repair parts, special tools, test and support equipment having quantitative allowances for initial **stockage** at the organizational level.

b. Repair Parts -Section III. A list of repair parts authorized for the performance of maintenance at the organizational level in index number sequence.

c. Special Tools, Test and Support Equipment - Section IV. Not applicable.

d. Indices -Section V. Conversion of numbers and indices is explained as follows:

(1) Index - Federal Stock Number to Index Number. A list of Federal stock numbers, in ascending numerical sequence, cross-referenced to the Repair Parts list index number.

(2) Index - Reference Number to Figure and Item Number. A list of reference numbers (part numbers and manufacturers codes), in ascending alphanumeric sequence, cross-referenced to figure and item number.

(3) Index - Reference Designation to Index Number. A list of Reference Designations (RD), in ascending alphanumeric sequence, cross-referenced to the Repair Parts list index number.

(4) Index -- Federal Stock Number to Figure and Item Number. A list of Federal stock numbers, in ascending numerical sequence, cross-referenced to the illustration figure number and item number.

(5) Index - Figure and Item Number to Index Number. A list of figure and item numbers, each in ascending numerical sequence, cross-referenced to the Repair Parts list index numbers.

1-3. Explanation of Columns.

The following provides an explanation of columns in the tabular lists in Sections III and IV.

a. Source, Maintenance, and Recoverability (SMR) Codes, Column 1:

(1) Source code, indicates the selection status and source for the listed item. Source codes are:

	Explanation
A	Applies to assemblies which are not procured or stocked as such but are made up of two or more units, each of which carry individual stock numbers and descriptions and are procured and stocked and can be assembled by units at indicated maintenance categories
AH	Applies to repair parts requiring assembly at a category higher than that authorized to replace the part
G	Applies to major assemblies that are procured with Procurement of Electronic and Missile, Army (PEMA) funds for initial issue only to be used as exchange assemblies at Direct Support Unit (DSU) and General Support Unit (GSU) level. These assemblies will not be stocked above DSU and GSU level or returned to depot level
P	Applies to repair parts which are stocked in or supplied from General Support Activity/Direct Support Activity (GSA,/DSA), or Army supply system, and authorized for use at indicated maintenance categories

(2) **Maintenance code**, indicates the lowest category of maintenance authorized to install the listed item. The maintenance level is:

Code	Explanation
0	Organizational maintenance

(3) **Recoverability code**, indicates whether unserviceable items should be returned for recovery or salvage. Items not coded are expendable. Recoverability code is:

Code	Explanation
R	Applies to repair parts and assemblies which are economically repairable at DSU and GSU activities and which normally are furnished by supply on an exchange basis

b. The second line of column 1 is a cross-reference to the index number of the repair part as it appears in the Selection Work Sheet.

c. **Federal Stock Number, Column 2.** This column indicates the Federal stock number assigned to the item and will be used for requisitioning purposes.

d. **Description, Column 3.** This column indicates the Federal item name of the item required. A part number or other reference number is followed by the applicable five-digit Federal supply code for manufacturers.

e. **Unit of Measure (U/M), Column 4.** A two-character alphabetic abbreviation indicating the amount or quantity of the item upon which the allowances are based; e. g., EA (each).

f. **Quantity Incorporated in Unit, Column 5.** This column indicates the quantity of the item used in any one assembly. An "AR" appearing in this column in lieu of a quantity indicates that a definite quantity cannot be indicated; e. g., shims, spacers, etc.

g. **15-Day Organizational Maintenance Allowance, Column 3 of Section II and Column 6 of Section III and N.**

(1) The allowance columns are divided into four subcolumns. Indicated in each subcolumn opposite the first appearance of each item is the total quantity of items authorized for the number of equipments supported. Subsequent appearances of the same item will have the letters "REF" in the allowance columns. Items authorized for use as required but not for initial stockage are identified with an asterisk in the allowance column.

(2) The quantitative allowances for organizational level of maintenance represents one initial prescribed load for a 15-day period for the number of equipments supported. Units and organizations authorized additional prescribed loads will multiply the number of prescribed loads authorized by the quantity of repair parts reflected in the density column applicable to the number of items supported to obtain the total quantity Of repair parts authorized.

(3) Organizational units providing maintenance for more than 100 of these equipments shall determine the total quantity of parts required by converting the equipment quantity to a decimal factor by placing a decimal point before the next to last digit of the number to indicate hundredths, and multiplying the decimal factor by the parts quantity authorized in the 51-100 allowance column. Example, authorized allowance for 51-100 equipments is 40; for 150 equipments multiply 40 by 1.50 or 60 parts required.

(4) Subsequent changes to allowances will be limited as follows: No change in the range of items is authorized. If additional items are considered necessary, recommendation should be forwarded to Commanding Officer, U.S. Army Electronics Command, **ATTN: AMSEL-ME-NMP-AS, Fort Monmouth, New Jersey 07703** for exception or revision to the allowance list. Revisions to the range of items authorized will be made by the Commanding officer, U.S. Army Electronics Command, **ATTN: AMSEL-ME-NMP-AS, Fort Monmouth, New Jersey 07703** based upon engineering experience, demand data, or TAERS information.

h. **Illustration, Column 7.** This column indicates the figure number of the illustration in which the item is shown, and the number used to reference the item in the illustration.

i. **Reference Designation, Column 8.** This column indicates the reference designation symbol of each item in the equipment.

1-4. Special Information.

- a. Repair parts mortality has been based on 100 equipments operating 65 hours a month for 1 year.
- b. The basis Of issue for authorized special tools, test and support equipment is the number of end items of equipment supported and the number of maintenance personnel allocated to perform the required maintenance operations as follows: TWO sets of Special Tools and Test Equipment supporting twenty-three AN/ASN-86 Inertial Navigation Sets.
- c. The following publications pertain to Test **Stand**, Gyro Stabilized Platform MT-4145/ASN-86 and its components.

TM 11-6625-2443-12	Operator's and Organizational Maintenance Manual for Test Stand, Gyro Stabilized Platform MT-4145, ASN-86
TM 11-6625-2443-15	Operator, Organizational, Direct Support, General Support, and Depot Maintenance for Test Stand, Gyro Stabilized Platform MT-4245/ASN-86
TM 11-6625-2443-45	General Support and Depot Maintenance Manual for Test Stand, Gyro Stabilized Platform MT-4145/ASN-86
TM 11-6625-2443.45P	General Support and Depot Maintenance Repair Parts and Special Tools List for Test Stand, Gyro Stabilized Platform MT-4145/ASN-86

1-5. How to Locate Repair Parts.

- a. When the Federal stock number or reference number is unknown:
 - (1) First. Using the List of Illustrations, determine the assembly within which the repair part belongs.
 - (2) Second. Find the illustration covering the assembly to which the repair part belongs.
 - (3) Third. Identify the repair part on the illustration and note the figure and item number of the repair part.
 - (4) Fourth. Using the Figure and Item Number Index, locate the sequence index number of the repair part.
 - (5) Fifth. Refer to the sequence index number in the Repair Parts list for the Federal stock number or reference number.
- b. When the Federal stock number or reference number is known:
 - (1) First. Using either of the indices of Federal Stock Numbers, find the Federal stock number. These indices are in ascending numerical sequence by Federal stock, number, cross-referenced to either the Repair Parts list index number, or to the illustration figure and item number.
 - (2) Second. Using the Index of Reference Numbers, find the applicable number. This index is in ascending alphanumeric sequence by reference number, cross-referenced to the Repair Parts list index number.
 - (3) Third. Using the Repair Parts list, find the assembly of the repair part and the illustration figure and item number, or the index number, as referenced in the indices of Federal Stock Numbers or Reference Numbers.
- c. When the Reference Designation (RD) is known:
 - (1) First. Using the Reference Designation Index, find the **RD**. This index is in ascending alphanumeric sequence, cross-referenced to the index number. of the Repair Parts list. The next higher assembly of any component may be determined by using the RD Index. Identify the RD of the part in question and, by following the upward progression of this index, the sequence number of the next higher assembly part number may be identified. The RD is compiled as follows:

TM11-6625-2443-20P

<u>1</u> Unit No.	<u>AI</u> Assembly Letter and No.	<u>AI</u> Subassembly Letter and No.	<u>MP1</u> Component Letter and No.
----------------------	---	--	---

(2) Second. Using the Repair Parts list, find **the** assembly of the repair part and the illustration figure and item number.

d. When the Figure and Item Number are known:

(1) First. Identify the repair part on the applicable figure.

(2) Second. Cross-reference to the individual indices for information required.

1-6. Abbreviations. Not applicable.

1-7. Federal Supply Codes for Manufacturers.

Code	Manufacturer
06481	Litton Systems, Inc. Guidance and Control Systems Div. 5500 Canoga Ave. Woodland Hills, Calif. 91364
75915	Littelfuse, Inc. 800 E. Northwest Hwy. Des Plaines, Ill. 60016

1-8. Recommendations for Maintenance Publication Improvements.

Report of errors, omissions, and recommendations for improving this publication by the individual user is encouraged. Reports should be submitted on DA Form 2028 (Recommended Changes to DA Publications) and forwarded direct to Commanding General, U.S. Army Electronics Command, Attn: AMSEL-ME-NMP-AS, Fort Monmouth, New Jersey 07703.

SECTION II. PRESCRIBED LOAD ALLOWANCE

(1) FEDERAL STOCK NUMBER	(2) DESCRIPTION	USABLE ON CODE	(3) 15-DAY ORGANIZATIONAL MAINTENANCE ALLOWANCE			
			(a) 1-5	(b) 6-20	(c) 21-50	(d) 51-100
5920-295-9602	FUSE, CARTRIDGE		2	2	3	6

SECTION III. REPAIR PARTS FOR ORGANIZATIONAL MAINTENANCE

(1) SMR CODE INDEX NO	(2) FEDERAL STOCK NUMBER	(3) DESCRIPTION REFERENCE NUMBER & MFR. CODE	(4) UNIT OF MEAS.	(5) QTY INC IN UNIT	(6) 15-DAY ORGANIZATIONAL MAINTENANCE ALLOW				(7) ILLUSTRATIONS FIGURE & ITEM NO.	(8) REFERENCE DESIGNATION
					(a) 1-5	(b) 6-20	(c) 21-50	(d) 51-100		
G O R A001	6605-522-3740		EA	1					1 - 1	1
P O A029	5920-295-9602		EA	1	2	2	3	6	1 - 3	181F1
AH R A060			EA	1					1 - 2	2W1

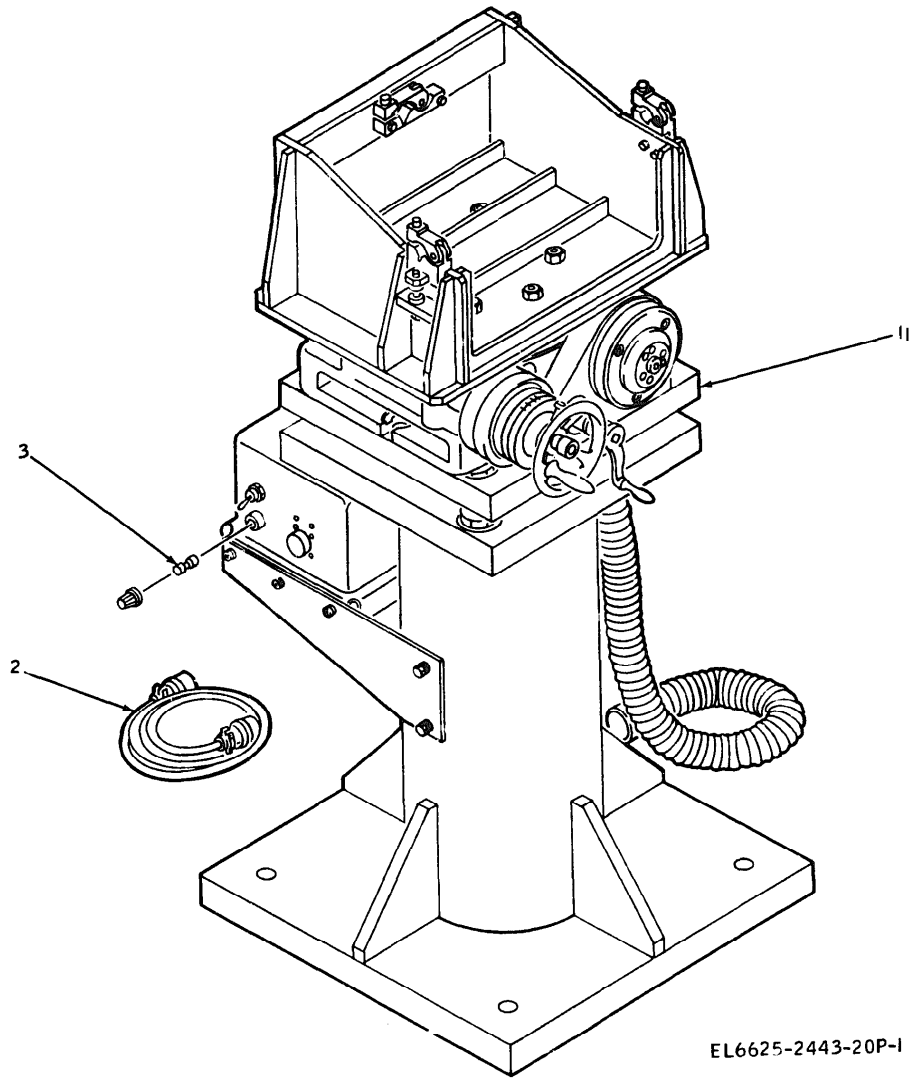


Figure 1. Test Stand, Gyro Stabilized Platform MT-4145/ASN-86

SECTION IV. SPECIAL TOOLS, TEST & SUPPORT EQUIPMENT FOR ORGANIZATIONAL MAINTENANCE

(1) SMR CODE	(2) FEDERAL STOCK NUMBER	(3) DESCRIPTION REFERENCE NUMBER & MFR CODE	(4) UNIT OF MEAS.	(5) QTY INC IN UNIT	(6) 15 DAY ORGANIZATIONAL MAINTENANCE ALW				(7) ILLUSTRATIONS FIGURE & ITEM NO	(8) REFERENCE DESIGNATION
					(a) 1 5	(b) 6 20	(c) 21 50	(d) 51 100		
(NOT APPLICABLE)										

SECTION V. INDEX-FEDERAL STOCK NUMBER CROSS REFERENCE TO INDEX NUMBER

FEDERAL STOCK NUMBER	INDEX NO.	FEDERAL STOCK NUMBER	INDEX NO.	FEDERAL STOCK NUMBER	INDEX NO.
5920-295-9602 6150 6605-522-3740	A028 A060 A001				

SECTION V. INDEX - REFERENCE NUMBER CROSS-REFERENCE TO FIGURE AND ITEM NUMBER

REFERENCE NUMBER	MFG CODE	FIGURE & ITEM NO.	REFERENCE NUMBER	MFG. CODE	FIGURE & ITEM NO.	REFERENCE NUMBER	MFG. CODE	FIGURE & ITEM NO.
244030	06481	1 - 1						
247966	06481	1- 2						
313001	75915	1- 3						

SECTION V. INDEX-REFERENCE DESIGNATION CROSS REFERENCE TO INDEX NUMBER

REFERENCE DESIGNATION	INDEX NO.	REFERENCE DESIGNATION	INDEX NO.	REFERENCE DESIGNATION	INDEX NO.
1 1B1F1 1W1	A001 A028 A060				

SECTION V. INDEX - FEDERAL STOCK NUMBER CROSS-REFERENCE TO FIGURE AND ITEM NUMBER

STOCK NUMBER	FIGURE & ITEM NO.	STOCK NUMBER	FIGURE & ITEM NO.	STOCK NUMBER	FIGURE & ITEM NO.
5920-295-9602	1 - 3				
6150	1 - 2				
6605-522-3740	1 - 1				

SECTION INDEX-FIGURE AND ITEM NUMBER CROSS REFERENCE TO INDEX NUMBER

FIG. NO.	ITEM NO. OR REFERENCE DESIGNATION	INDEX NO.	FIG. NO.	ITEM NO. OR REFERENCE DESIGNATION	INDEX NO.
1 1 1	1 2 3	A001 A060 A028			

By Order of the Secretary of the Army:

Official:

VERNE L. BOWERS,
Major General, United States Army,
The Adjutant General,

W. C. WESTMORELAND,
General, United States Army,
Chief of Staff.

Distribution:

To be distributed in accordance with DA Form 12-31, Direct/General Support requirements for the OV-1D and U-21 aircrafts.

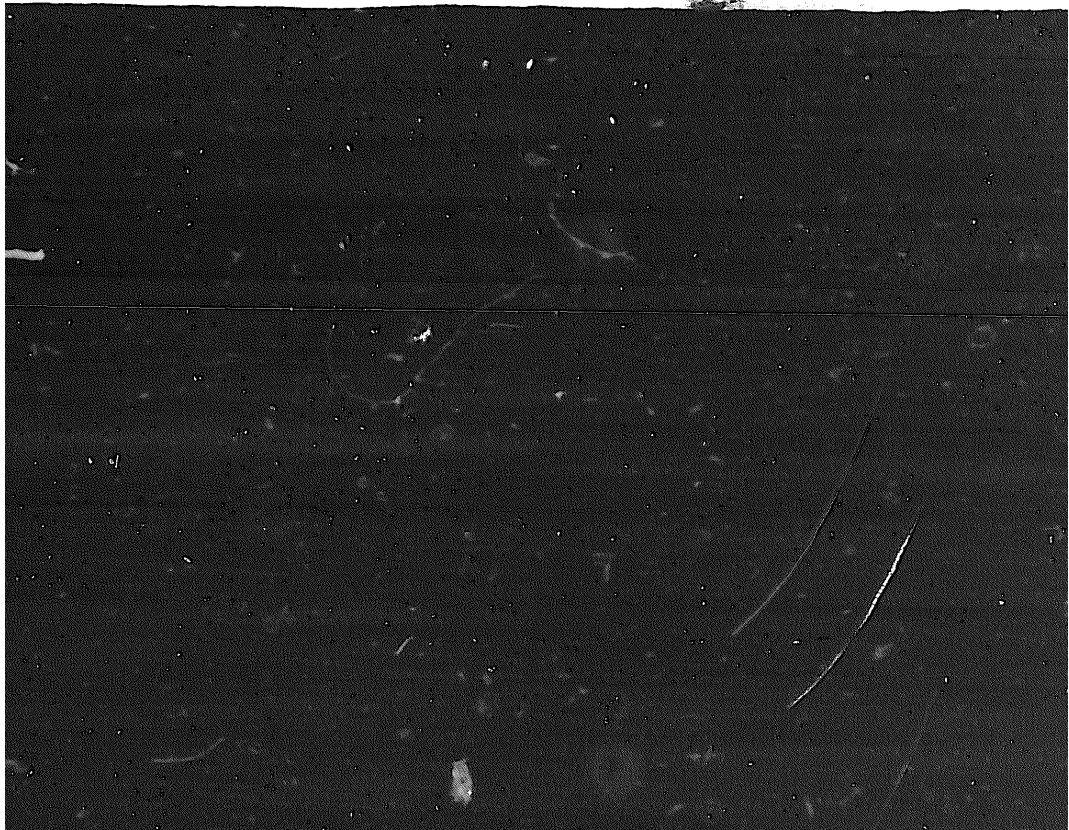
* U. S. GOVERNMENT PRINTING OFFICE: 1971-769025/206.

END

9-18-83

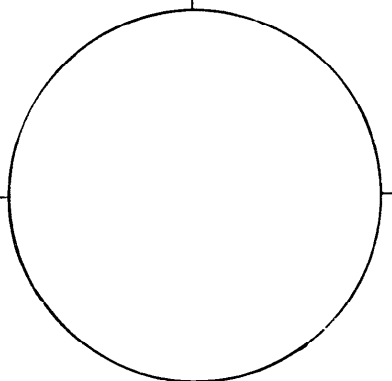
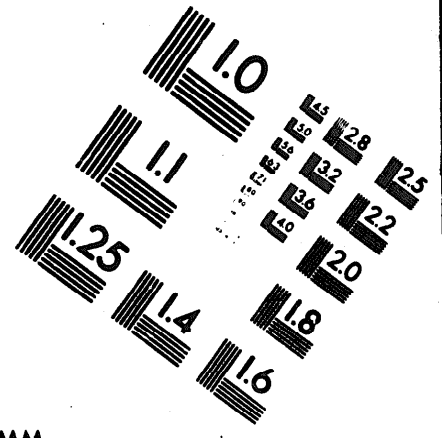
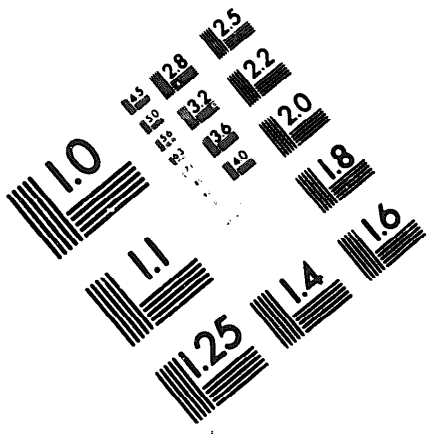
DATE





DEPARTMENT OF THE ARMY

MICROFORM
TEST TARGET



150 MM

1.0 mm (e= 81 mm)

ABCDEF GHIJ KLMNOPQRSTUVWXYZ1234567890
abcdefghijklmnopqrstuvwxyz\$%&/'%# 1/2 1/4 3/4 ---+ x&@*

1.5 mm (e= 1.09 mm)

ABCDEF GHIJ KLMNOPQRSTUVWXYZ1234567890
abcdefghijklmnopqrstuvwxyz\$%&/'%# 1/2 1/4 3/4 ---+ x&@*

2.0 mm (e= 1.37 mm)

ABCDEF GHIJ KLMNOPQRSTUVWXYZ
abcdefghijklmnopqrstuvwxyz
1234567890\$%&/'%# 1/2 1/4 3/4 ---+ x&@*

2.5 mm (e= 1.77 mm)

ABCDEF GHIJ KLMNOPQRSTUVWXYZ
abcdefghijklmnopqrstuvwxyz
1234567890\$%&/'%# 1/2 1/4 3/4 ---+ x&@*

1.0 mm (e= 81 mm)

ABCDEF GHIJ KLMNOPQRSTUVWXYZ1234567890
abcdefghijklmnopqrstuvwxyz\$%&/'%# 1/2 1/4 3/4 ---+ x&@*

1.5 mm (e= 1.09 mm)

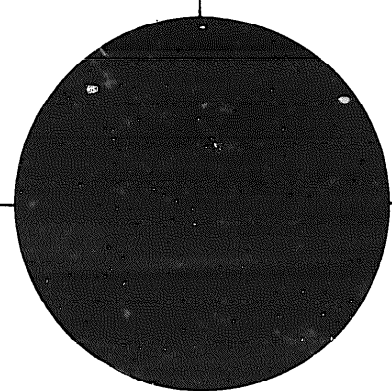
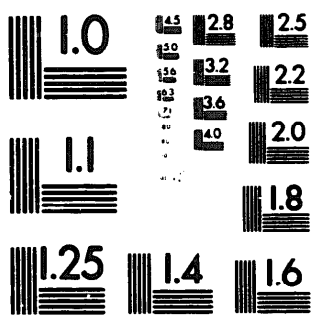
ABCDEF GHIJ KLMNOPQRSTUVWXYZ1234567890
abcdefghijklmnopqrstuvwxyz\$%&/'%# 1/2 1/4 3/4 ---+ x&@*

2.0 mm (e= 1.37 mm)

ABCDEF GHIJ KLMNOPQRSTUVWXYZ
abcdefghijklmnopqrstuvwxyz
1234567890\$%&/'%# 1/2 1/4 3/4 ---+ x&@*

2.5 mm (e= 1.77 mm)

ABCDEF GHIJ KLMNOPQRSTUVWXYZ
abcdefghijklmnopqrstuvwxyz
1234567890\$%&/'%# 1/2 1/4 3/4 ---+ x&@*



200 MM

250 MM

